

BNL KARTING
SERIES



**TECHNICAL
REGULATIONS** **2020**

***DELLORTO
CHECKLIST***



RACB - VISA T01 - BNL/B20

Checklist DELLORTO

Carburetor	For all ROTAX EVO engines the Dellorto VHSB 34 XS is obligatory
Hight Float Bracket	<p>The height of the two arms of the float bracket should be within the reach of the float bracket control template (Rotax No. 277 400) Measured with the carburetor upside down and without float chamber gasket (see photo)</p> 
Needle Valve 150	<p>Needle Valve must be marked with 150 and Needle must be marked with the diamond symbol "INC" (see photo).</p> 
Float chamber	The aluminium carburetor plug screw (Rotaxnr. 261 030) is allowed to be used.
Carburetor Slide	The carburetor slide must be marked with '45'.
Jet Needle	The jet needle must be marked with 'K57'.
Float	<p>Always two floats of 4,0gr must be used. The floats must be marked with '4,0 gr'.</p>
Dellorto Main Jet	Size free.

Needle Jet DP

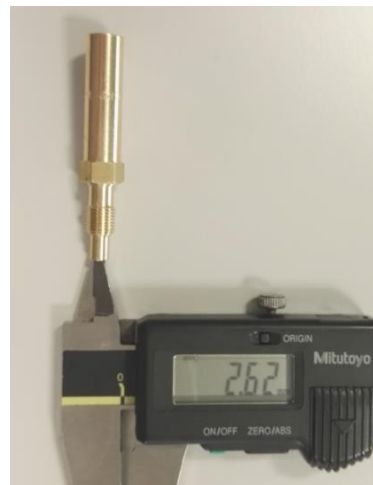
The Needle Jet must be marked with "DP267".
Total length of Needle Jet : 51,0 +/- 0,5 mm (see photo)



Length of the bottom part : 33,0 +/- 0,45 mm (see photo)







Top hole diameter : 2,67 +/- 0,10mm (see photo)



Idle Jet

The Idle Jet must be marked with '60'. The Veith caliber pin 0,65 should **not** fit through the hole. (see photo)



<p>Idle Jet Insert</p>	<p>The Idle Jet Insert must be marked with '45'. The Veith caliber pin 0,50 should not fit trough the hole.</p>
<p>Main Spray Nozzle</p>	<p>The main spray nozzle may only be removed from the carburator with use of the Rotax developed venturi tool set (Rotaxnr. 676 034). The total length of the main spray nozzle : 23,75 +/- 0,35 mm (see photo).</p>  <p>The total length of the bottom part of the main spray nozzle: 15,75 +/- 0,25 mm (see photo).</p> 
<p>Main Spray Nozzle</p>	<p>The size of the milled away part of the main spray nozzle: 5,8 +/- 0,3 mm (see photo).</p>  <p>The size of the hole in the main spray nozzle: 5,0 +/- 0,15 mm (see photo).</p> 

Carburetor Venturi Insert

The carburetor venturi insert must be marked with '12,5' (see photo).



The carburetor venturi insert askew hole: The Veith caliber pin 0,60 should **not** fit through the hole (see photo).



The carburetor venturi insert vertical hole: The Veith caliber pin 1,30 should **not** fit through the hole (see photo).

